

## **GUIDE FOR PARTICIPANTS**

59<sup>th</sup> Governing Council Session  
International Agency for Research on Cancer (IARC)  
Lyon, 18–19 May 2017



*Please note that IARC is a non-smoking area*

*For security reasons, badges must be worn at all times*

**Table of Contents**

GUIDE FOR PARTICIPANTS.....1  
MEETING VENUE.....3  
PROVISIONAL AGENDA .....4  
ORGANIZATIONAL CHART .....6  
IARC SECTIONS AND GROUPS .....7  
REGISTRATION.....9  
HOTEL ACCOMMODATION .....10  
TRAVEL AND TRANSPORTATION ARRANGEMENTS.....11  
SECURITY .....12  
RELATED EVENTS .....13  
USEFUL INFORMATION .....14

## **MEETING VENUE**

The 59<sup>th</sup> Governing Council Session will open on Thursday 18 May 2017 at 09:00 and close no later than 16:00 on Friday 19 May.

The meeting will be held at the

International Agency for Research on Cancer (IARC)  
150 cours Albert Thomas  
69008 Lyon  
France

☎: +33 (0) 4 72 73 84 85

Meeting room: Auditorium

---

59<sup>th</sup> IARC Governing Council Session, Lyon, 18–19 May 2017**PROVISIONAL AGENDA*****Thursday 18 May 2017 – Plenary Session***

<b>Indicative timing</b>	<b>Item No.</b>	<b>Item</b>	<b>Document No.</b>
09:15 – 09:20	1.	Opening of the Session	
09:20 – 09:25	2.	Election of Rapporteur	
09:25 – 09:30	3.	Adoption of the Agenda	GC/59/1 (Prov.)
09:30 – 10:15	4.	Address by the Director-General, WHO	
<b><i>10:15 – 10:45</i></b>		<b><i>Group Photograph &amp; Coffee &amp; tea break</i></b>	
10:45 – 12:00	5.	Director's report, including major scientific highlights	GC/59/2
12:00 – 12:45	6.	Report of the Fifty-third session of the Scientific Council	GC/59/3
12:45 – 13:00	7.	Director's response to recommendations from the 53 <sup>rd</sup> Session of the Scientific Council	GC/59/4
<b><i>13:00 – 14:00</i></b>		<b><i>Lunch</i></b>	
14:00 – 14:30	8.	Financial Report, Report of the External Auditor and Financial Statements for the year ended 31 December 2016	GC/59/5
14:30 – 16:00	9.	Proposed Programme and Budget (2018–2019)	GC/59/6
<b><i>16:00–16:30</i></b>		<b><i>Coffee &amp; tea break</i></b>	
16:30 – 17:15	10.	Resource Mobilization	GC/59/7
17:15 – 18:00	11.	Discussion of the Working Group recommendations for evaluating the implementation of the IARC Medium-Term Strategy (2016–2020)	GC/59/8
<b><i>18:00</i></b>		<b><i>End of Session, followed by a dinner in a Lyonnais restaurant at 19:45</i></b>	

**Friday 19 May 2017 – Plenary Session**

<b>Indicative timing</b>	<b>Item No.</b>	<b>Item</b>	<b>Document No.</b>
09:30 – 10:15	12.	Proposals regarding the procedure for the election of the Director	GC/59/9
10:15 – 10:30	13.	Biennial Report of the IARC Ethics Committee (IEC), 2015–2016	GC/59/10
10:30 – 11:00	14.	Request for use of funds from the Governing Council Special Fund: Scientific Equipment	GC/59/11 and GC/59/Inf.Doc. No.2
<b>11:00 – 11:30</b>		<b>Coffee &amp; tea break</b>	
11:30 – 12:15	15.	Update on the “Nouveau Centre” project	GC/59/12
12:15 – 12:30	16.	Statement by the IARC Staff Association	GC/59/13
12:30 – 12:45	17.	Acceptance of grants and contracts, including report on interest apportionment	GC/59/14
12:45 – 13:00	18.	Acceptance of donations	GC/59/15
<b>13:00 – 14:00</b>		<b>Lunch</b>	

**Friday 19 May 2017 – Closed Session**

<b>Indicative timing</b>	<b>Item No.</b>	<b>Item</b>	<b>Document No.</b>
14:00 – 15:00	19.	Appointment of new members of the Scientific Council ( <i>closed session</i> )	GC/59/16

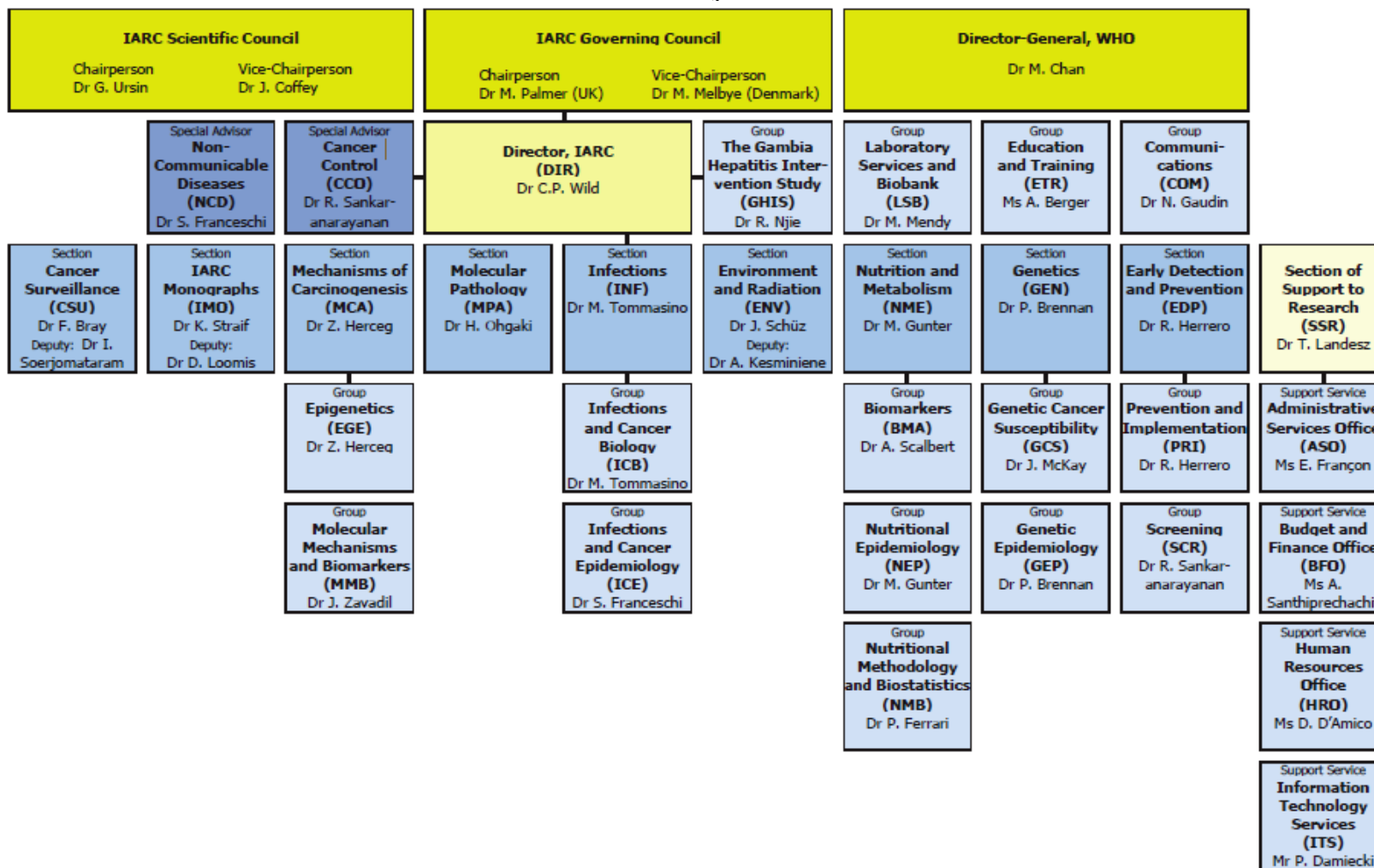
**Friday 19 May 2017 – Plenary Session**

<b>Indicative timing</b>	<b>Item No.</b>	<b>Item</b>	<b>Document No.</b>
15:00 – 15:15	20.	Membership of the Subcommittee on the admission of new Participating States	
15:15 – 15:30	21.	Any other business	
15:30 – 15:40	22.	Election of Chairperson and Vice-Chairperson for next session	
15:40 – 15:50	23.	Date of next session	
15:50 – 16:00	24.	Closure of session	

## ORGANIZATIONAL CHART

International Agency for Research on Cancer  
World Health Organization

30 January 2017



## IARC SECTIONS AND GROUPS

ACRONYM	SECTION / GROUP	SECTION / GROUP HEAD	SECRETARY / AA	BA	HRA	EXT.	ROOM	FLOOR
						Head / Sec.	Head / Sec.	
<b>CSU</b>	<b>Section of CANCER SURVEILLANCE</b>	Dr F. Bray Deputy: Dr I. Soerjomataram	Ms F. Louled	MO	MB	8453 / 8350	L111 / L109	Latarjet 1
<b>EDP</b>	<b>Section of EARLY DETECTION AND PREVENTION</b>	<b>Dr R. Herrero</b>						
<b>PRI</b>	Prevention and Implementation Group	Dr R. Herrero	Ms K. Abdeyem	MO	CB	8683 / 8087	L307 / L308	Latarjet 3
<b>SCR</b>	Screening Group	Dr R. Sankaranarayanan	Ms L. Boulegroun			8599 / 8674	L407 / L408	Latarjet 4
<b>ENV</b>	<b>Section of ENVIRONMENT AND RADIATION</b>	<b>Dr J. Schüz</b> Deputy: Dr A. Kesminiene	Ms C. Bassier Ms C. Chassin	EO	MB	8441 / 8554 8662 / 8452	301 / 319 311 / 310	3
<b>GEN</b>	<b>Section of GENETICS</b>	<b>Dr P. Brennan</b>						
<b>GCS</b>	Genetic Cancer Susceptibility Group	Dr J. McKay	Ms I. Rondy	FR	CB	8093 / 8558	1012 / 1011	10
<b>GEP</b>	Genetic Epidemiology Group	Dr P. Brennan	Ms C. Volatier			8391 / 8533	413 / 412	4
<b>IMO</b>	<b>Section of IARC MONOGRAPHS</b>	<b>Dr K. Straif</b> Deputy: Dr D. Loomis	Ms H. Lorenzen	TO	CB	8511 / 8507 8049	516 / 515 511	5
<b>INF</b>	<b>Section of INFECTIONS</b>	<b>Dr M. Tommasino</b>						
<b>ICB</b>	Infections and Cancer Biology Group	Dr M. Tommasino	Ms N. Suty	TO	CB	8191 / 8190	909 / 908B	9
<b>ICE</b>	Infections and Cancer Epidemiology Group	Dr S. Franceschi	Ms S. Gamon			8402 / 8404	L210 / L209	Latarjet 2

<b>MCA</b>	<b>Section of MECHANISMS OF CARCINOGENESIS</b>	<b>Dr Z. Herceg</b>						
<b>EGE</b>	Epigenetics Group	Dr Z. Herceg	Ms E. Page	MO	CB	8398 / 8653	710 / 711	7
<b>MMB</b>	Molecular Mechanisms and Biomarkers Group	Dr J. Zavadil	Ms S. Nouveau			8362 / 8539	709 / 711	7
<b>MPA</b>	<b>Section of MOLECULAR PATHOLOGY</b>	<b>Dr H. Ohgaki</b>	Ms A.-S. Hameau	FR	MB	8534 / 8447	615 / 614	6
<b>NME</b>	<b>Section of NUTRITION AND METABOLISM</b>	<b>Dr M. Gunter</b>						
<b>BMA</b>	Biomarkers Group	Dr A. Scalbert	Ms K. Racinoux	TO	MB	8095 / 8545	605/604	6
<b>NEP</b>	Nutritional Epidemiology Group	Dr M. Gunter	Ms N. Akel			8094 / 8168	L010 / L008	Latarjet 0
<b>NMB</b>	Nutritional Methodology and Biostatistics	Dr P. Ferrari	Ms K. Zaluski			8031 / 8509	E14 / E22	BRC 1
<b>DIR</b>	<b>Office of the Director</b>	<b>Dr C.P. Wild (Director)</b>	Ms M. Geesink Ms L. Marnat	EO	CB	8684 / 8577 8569	1107 / 1108	11
<b>COM</b>	Communications Group	Dr N. Gaudin	Ms B. Geoffre	EO	CB	8567 / 8478	108 / 107	1
<b>ETR</b>	Education and Training Group	Ms A. Berger	Ms S. Montigny	EO		8349 / 8072	1112 / 1113	11
<b>GHS</b>	The Gambia Hepatitis Intervention Study	Dr R. Njie (Banjul)	Ms L. Marnat	EO		5002/3 / 8569	Gambia / 1108	11
<b>LSB</b>	Laboratory Services and Biobank Group	Dr M. Mendy	Ms S. Moldan	EO		8411 / 8035	E23/E22	BRC 1
<b>SSR</b>	<b>Section of Support to Research</b>	<b>Mr T. Landes (DAF)</b>	Ms. N. Lamandé	FR	MB	8467 / 8178	214 / 215	2
<b>ASO</b>	Administrative Services Office	Ms E. Françon	Ms V. Rut	FR	MB	8444 / 8502	R06 / R09	Ground floor
<b>BFO</b>	Budget and Finance Office	Ms A. Santhiprechachit	Mr S. Billard			8456 / 8598	211 / 210	2
<b>HRO</b>	Human Resources Office	Ms D. D'Amico	Ms S. Sibert			8000 / 8687	218 / 219	2
<b>ITS</b>	Information Technology Services	Mr P. Damiecki	Ms N. Lamandé			8432 / 8178	408 / 215	4 & 2



## **REGISTRATION**

Registration will take place in the lobby of the Agency, from 08:00.

All participants are requested to register to ensure that their names appear on the final list of Representatives.

The official languages are English and French. Simultaneous interpretation will be provided.

Documents will be prepared in English and French and will be available in early April at the following internet address: <http://Governance.iarc.fr>  
This site is no longer password protected.

Representatives will be seated in the alphabetical order of the French names of the Participating States.

Lunches will be served at the IARC cafeteria (12<sup>th</sup> floor of Tower building).

—

**HOTEL ACCOMMODATION**

The following hotels have been selected.

All rates are indicated per night in euros
--

2017	Single room		<u>Double room</u>
<b>Hôtel La Résidence***</b> 18 rue Victor Hugo 69002 Lyon Tel.: [+33] (0)4 78 42 63 28 E-mail : <a href="mailto:hotel-la-residence@wanadoo.fr">hotel-la-residence@wanadoo.fr</a> Metro: Bellecour	<b>€91</b>	plus breakfast <b>€9</b>	<b>€91</b>
<b>Hôtel Mercure Lyon Lumière***</b> 69-71 cours Albert Thomas 69003 Lyon Tel.: [+33] (0)4 78 53 76 76 E-mail : <a href="mailto:H1535@accor.com">H1535@accor.com</a> Metro: Sans-Souci	Standard <b>€119</b>	breakfast included	Standard <b>€119</b>
<b>Hôtel des Artistes***</b> 8 rue Gaspard André 69002 Lyon Tel.: [+33] (0)4 78 42 04 88 E-mail : <a href="mailto:reservation@hotel-des-artistes.fr">reservation@hotel-des-artistes.fr</a> Metro: Cordeliers	Classic <b>€133.20</b>	plus breakfast <b>€10</b>	Classic <b>€133.20</b>
<b>Hôtel Mercure Beaux-Arts****</b> 73-75 rue du Président Edouard Herriot 69002 Lyon Tel.: [+33] (0)4 78 38 09 50 E-mail : <a href="mailto:H2949@accor.com">H2949@accor.com</a> Metro: Cordeliers	<b>€186</b>	plus breakfast <b>€18.90</b>	<b>€186</b>

In order to secure a hotel reservation, please contact [IARC.GC@iarc.fr](mailto:IARC.GC@iarc.fr) no later than mid-April.

## TRAVEL AND TRANSPORTATION ARRANGEMENTS

We regret that it will not be possible to provide transport to Governing Council members to and from their hotels; however, taxis and public transport are available.

### *Airport transportation*

Information on “Rhônexpress” Tram (tram from the airport) timetables and fares can be found at <http://www.rhonexpress.fr/>

From the airport, take “Rhônexpress” Tram towards Lyon Part-Dieu, get off at Lyon Part-Dieu, cross Part-Dieu station to the Part-Dieu metro station. Take line B towards Stade de Gerland, get off at Saxe-Gambetta. Take line D towards Gare de Vénissieux, get off at Grange-Blanche and follow the signs for Exit No 3. At the top of the steps, walk to the right and continue a block and a half to the IARC tower (the tall blueish-gray building).

For directions please use the following link: [map around IARC](#) and look for:



### *Vehicle Rentals*

If you wish to rent a car, you may contact the following (examples only):

AVIS

<http://www.avis.eu/>

HERTZ

<https://www.hertz.com/rentacar/reservation/>

RENT-A-CAR

<http://www.rentacar.fr/>

### *Tram/Metro/Bus*

From Bellecour station (Hotel La Résidence & Hotel des Artistes), take line D towards Gare de Vénissieux, get off at Grange-Blanche and follow the signs for Exit No 3.

From Sans-Souci station (Hotel Mercure Lyon Lumière), take line D towards Gare de Vénissieux, get off at Grange-Blanche and follow the signs for Exit No 3.

Information on timetables and fares of Lyon metro/bus/tram network can be found at <http://www.tcl.fr/en>

### *Taxis*

Please ask your hotel receptionist and/or IARC staff to assist you.

## **SECURITY**

### *Identification badges*

When you arrive in the IARC building, your name badge will be handed to you at the entrance desk. For security reasons, we kindly request that you wear it at all times while on the Agency's premises (during meetings and social functions).

Please do not leave valuables in meeting rooms.

For your personal safety, please observe the following:

Do not leave laptops, cell phones, or other personal items unattended.

Please report immediately any suspicious persons, activities, phone calls or packages in or around IARC.

For the comfort of participants in the meeting, you are requested to switch off cellular telephones and pagers, or to switch them to a non-ringing or non-beeping mode.

### *Insurance*

IARC cannot accept liability for personal accidents or loss of or damage to the private property of participants and accompanying persons, either during or indirectly arising from attendance at the Governing Council. Participants should make their own arrangements with respect to health and travel insurance.

### *Services*

Travel agency  
Havas Voyages  
55 rue de la Villette  
69003 Lyon

☎: +33 (0)4 72 34 70 30

✉: [iarc@havasvoyages.fr](mailto:iarc@havasvoyages.fr)

If you need to change your travel arrangements and/or confirm your onward bookings, please see Mrs Sophie Servat ([servats@iarc.fr](mailto:servats@iarc.fr); +33(0)4 7273 8555), Administrative Services Office or Mrs Nathalie Lamandé ([lamanden@iarc.fr](mailto:lamanden@iarc.fr); +33(0)4 7273 8178), DAF Office.

## **RELATED EVENTS**

Participants and accompanying persons are invited to attend the following dinner (with prior registration):

*On Thursday 18 May 2017 at 19:45*

Restaurant "Le Restaurant de Fourvière"  
9 place de Fourvière, 69005 Lyon  
(Tel.: 04 78 25 21 15)

Please let the Documents Assistant (Agnès Meneghel: [IARC.GC@iarc.fr](mailto:IARC.GC@iarc.fr); +33(0)4 7273 8341) know if you **DO NOT** intend to participate in the dinner or whether special dietary requirements should be foreseen.

## USEFUL INFORMATION

### WIFI CONNECTION TO THE INTERNET

WIFI connection to the internet is possible. The WIFI network identifier (SSID) is: **“IARC\_Visitors”**. **The password will be communicated to you in the practical information slide projected on screen at the opening of the meeting.**

We do not offer file or print services. Printing a document is nevertheless possible provided that your document has been transferred on a USB key and using the IARC PC connected to the printer installed in the meeting room or via the Internet Café.

### INTERNET CAFÉ

The internet café, set-up with desktop(s) connected to a printer, will allow you to surf the web, check your e-mails, and/or print your documents. There are three machines on the ground floor outside the Auditorium and four machines in the Library on the first floor of the tower building.

Office du Tourisme et des Congrès – Lyon

Pavillon

Place Bellecour

69002 Lyon

☎: +33 (0) 472 776 969

<http://www.lyon-france.com/>

Weather

The weather in Lyon in May is likely to be between 16°C and 25°C.

The meeting room is air-conditioned at approximately 22°C.

Power supply

The power supply is 220/240V and the frequency of electrical current is 50 hertz.

Time difference

In May, the time in Lyon is Coordinated Universal Time (UTC) + 2 hours

Telephone and fax

The country code in France is 33 and the city code for Lyon is 4.

Tipping is not required since it is included in all bills.